

# Insight Data of YouTube from a Partner's View

*Xu Cheng, Mehrdad Fatourehchi, Xiaoqiang Ma,  
Cong Zhang, Lei Zhang, Jiangchuan Liu  
BroadbandTV Corp & Simon Fraser University  
March, 2014*

# Outline

- Background
- Data collection
- Analysis of data - views
- Analysis of data - referrers
- Conclusion

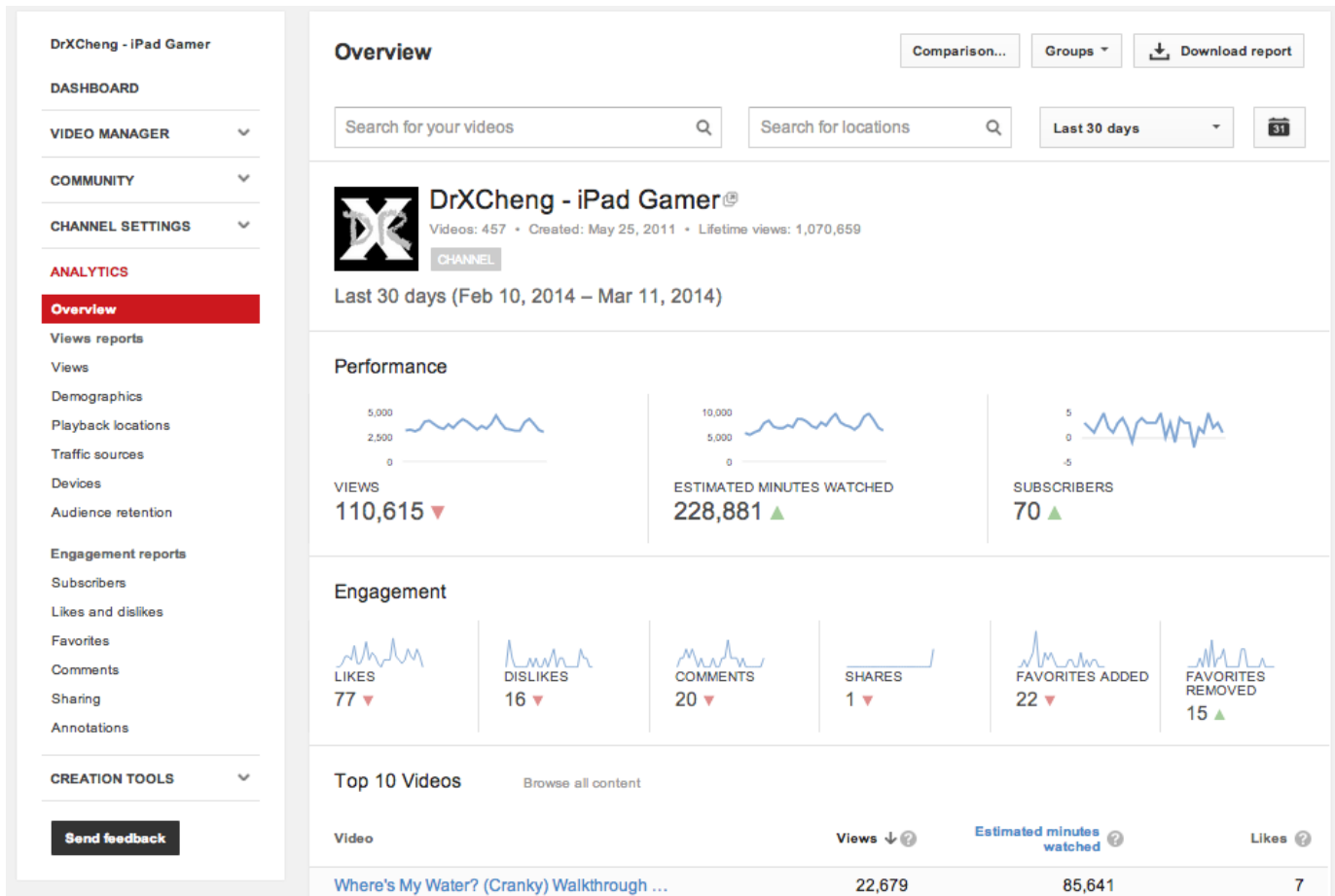
# Background

- YouTube partner
  - Video monetization
  - 1+ million partners



# Background

## YouTube insight data

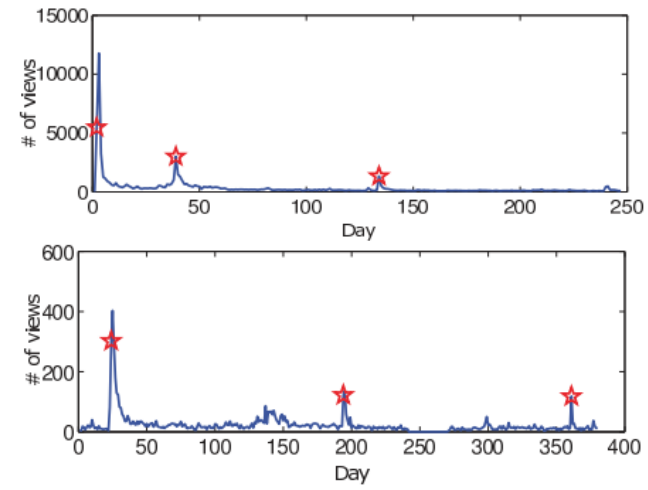
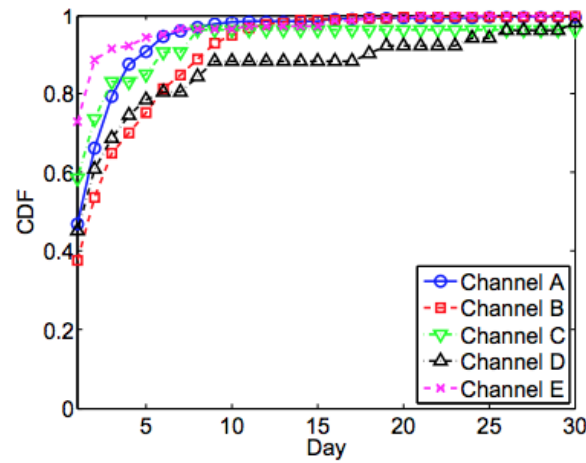
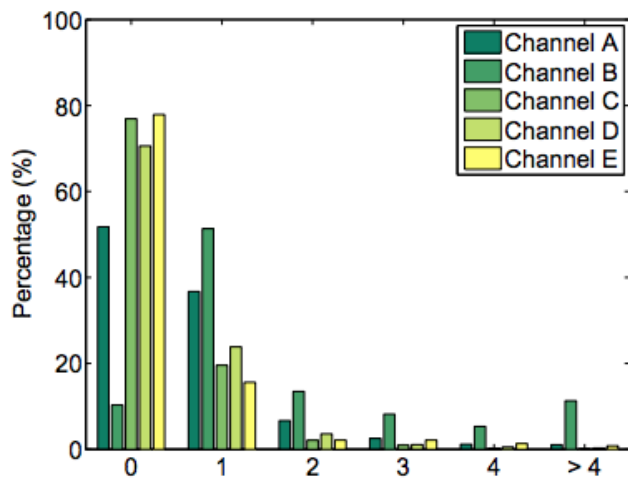


# Data Collection

- Authenticated crawler
- YouTube API
- Five channels - from BroadbandTV's partner network
- Three years of data
- Two reports: views, referrers

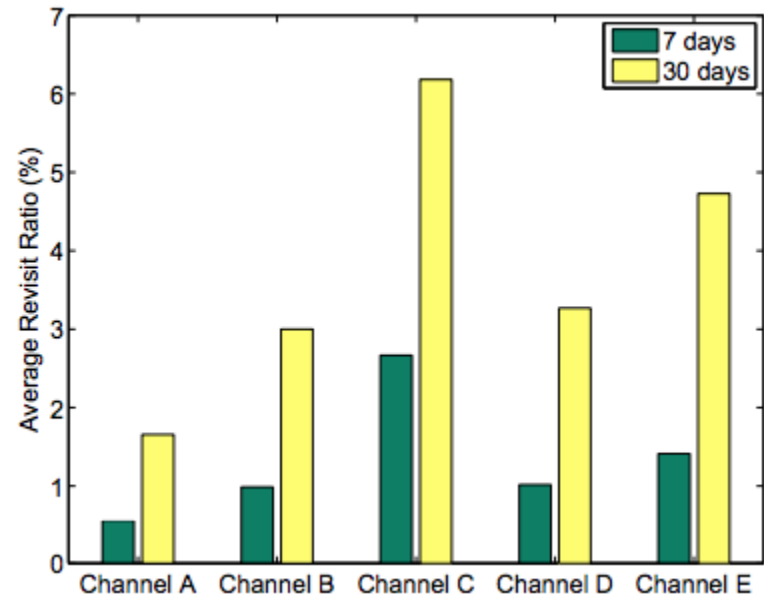
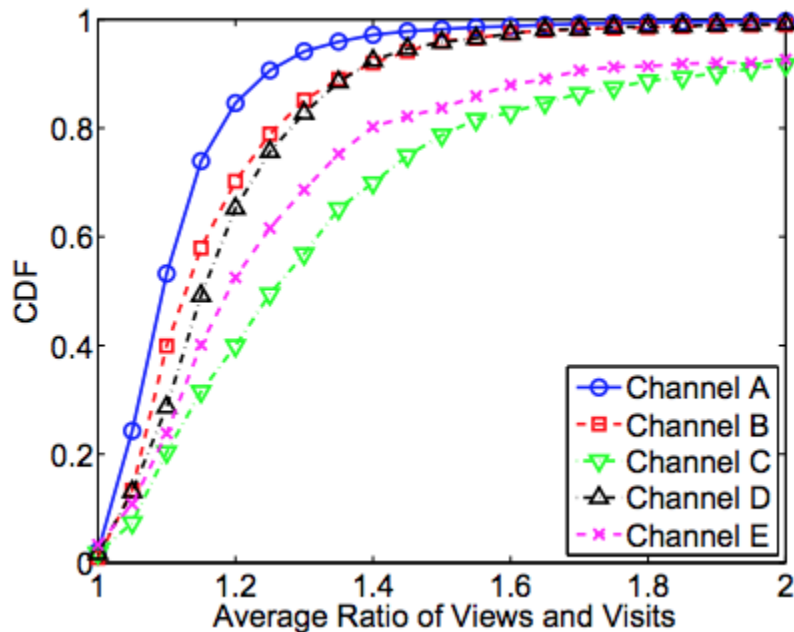
# Analysis of Data - views

- Viewing surge
  - Difficult to predict growth trend using generalized models
  - Simple time series analysis



# Analysis of Data - views

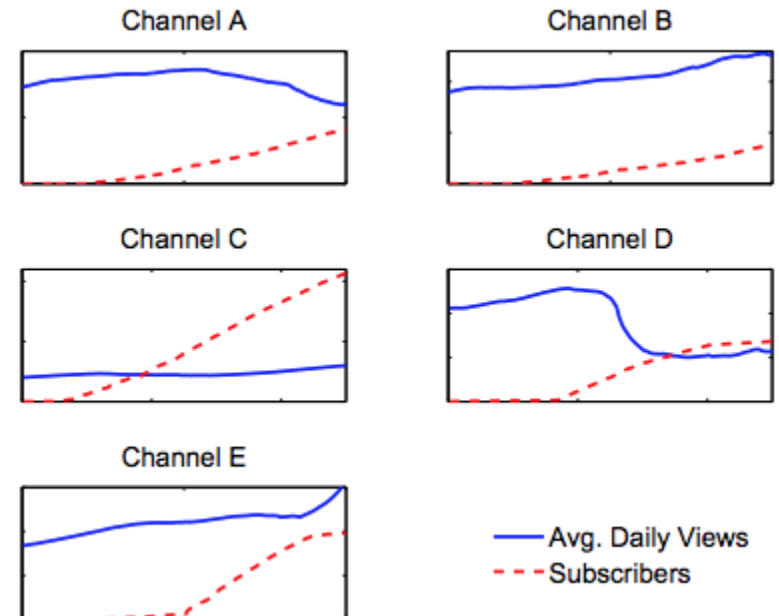
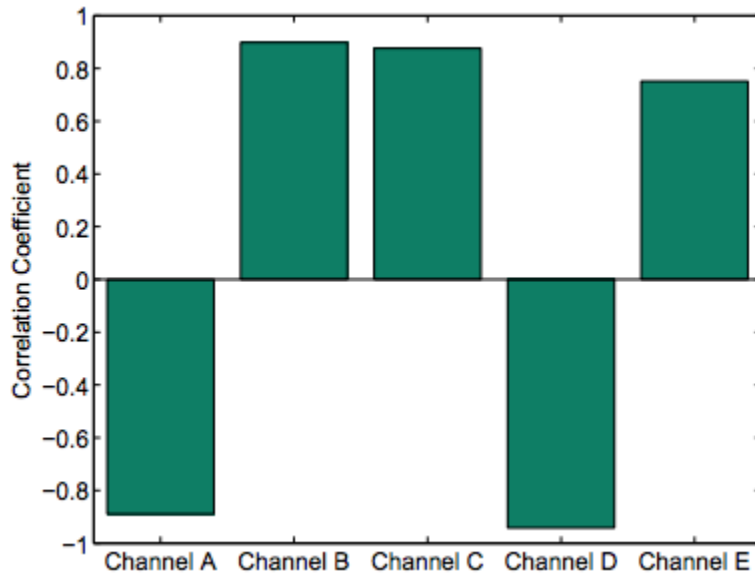
- Visiting behaviour
  - Views per visit
  - Revisit rate



# Analysis of Data - views

- Subscription

- Reflect the popularity of the channel
- Impact on video views along time

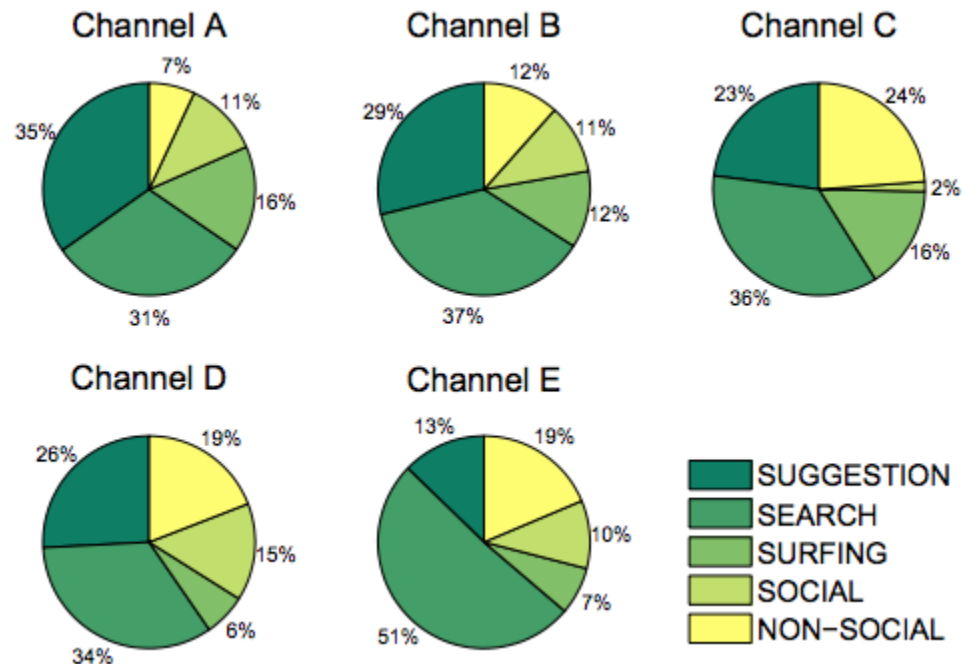




# Analysis of Data - referrers

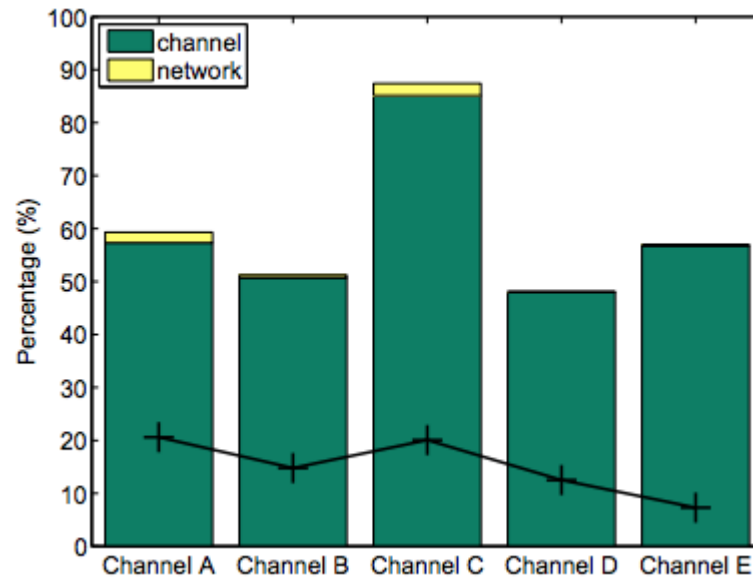
- Source breakdown

- Suggestion
- Video Search
- YouTube Surfing
- Social Referral
- Non-social Direct



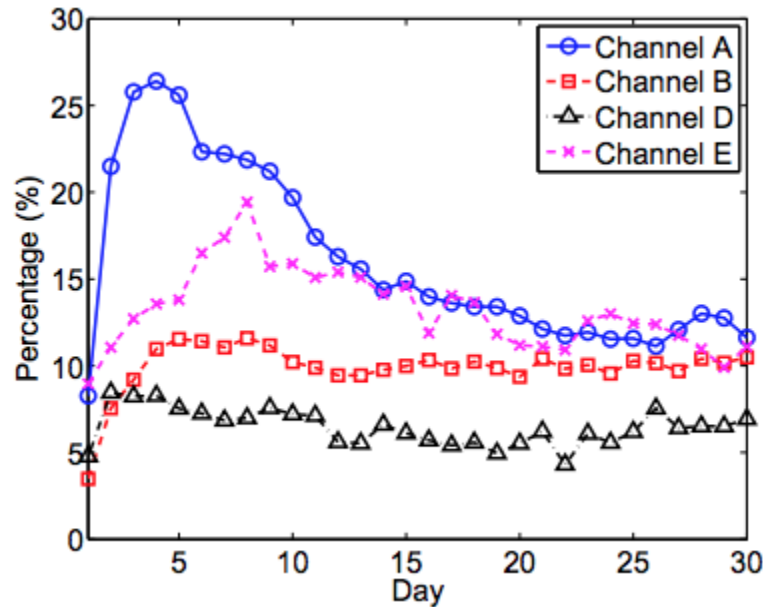
# Analysis of Data - referrers

- Impact from suggestion



# Analysis of Data - referrers

- Impact from social referral



# Conclusion

- YouTube partner and YouTube insight analytics
- Up to three years of insight data of five large YouTube partners' channels
- Unique features of YouTube partners
  - Statistics of viewing surges, visiting behaviour
  - Impact of user subscription and engagement on video views
  - Breakdown of referral sources
  - Impact of video suggestion and social referral on video views
- Valuable to YouTube partners for attracting more views and generating more revenue

Thank You!